



## GV-Remote ViewLog V2

With GV-Remote ViewLog V2, you can retrieve recordings from a remote GV-DVR / NVR / VMS through the network. It has the same functions as ViewLog coming with GV-DVR / NVR / VMS, such as Backup, Save as AVI, Object Search, and Database Files Backup. For details on how these functions work, refer to *Chapter 4 Video Playback*, [GV-VMS User's Manual](#) and [GV-DVR / NVR User's Manual](#) respectively.

---

**Note:** GV-Remote ViewLog V2 has enhanced user interfaces over previous versions of GV-Remote ViewLog. Not all of GV-Remote ViewLog's features are currently available on GV-Remote ViewLog V2.




---

### Contents

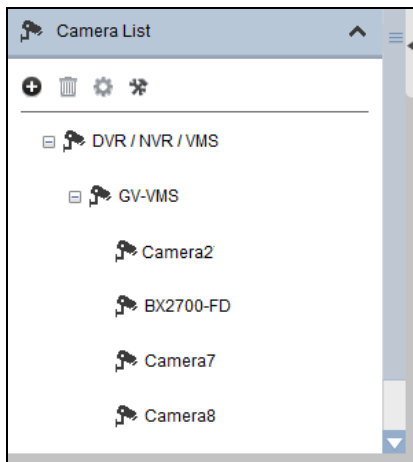
<b>1. Retrieving Recordings from GV-DVR / NVR / VMS</b> .....	<b>2</b>
1.1 Playing Back a Specific Period of Time from a Particular Camera .....	3
1.2 Timeline .....	3
<b>1. Retrieving Images of Object Index</b> .....	<b>4</b>
<b>2. Recording Backup</b> .....	<b>5</b>
<b>3. Host List Import and Export</b> .....	<b>5</b>
<b>4. Display Settings</b> .....	<b>6</b>
<b>5. Account Settings</b> .....	<b>6</b>



## 1. Retrieving Recordings from GV-DVR / NVR / VMS

To allow remote access to GV-DVR / NVR / VMS, enable **Remote ViewLog Service** in advance on the software. Take GV-VMS for example, click **Home**  > **Toolbar**  > **Network**  > **Control Center Server > Remote ViewLog Service.**

1. Download **GV-Remote ViewLog V2** from [GeoVision's website](#).
2. Run **GV-Remote ViewLog V2**. You will be promoted to create a Remote ViewLog account. After an account is created, the Add New Host dialog box appears.
3. In the Host Type, select **DVR / NVR / VMS**.
4. Type the **Name** (for reference), **IP Address**, **Account** and **Password** of the GV-DVR / NVR / VMS. Only modify the default port 5552 if necessary.
5. Click **OK**.
6. When the connection is established, you will see the cameras from the remote GV-DVR / NVR / VMS appearing on the Camera List. Drag and drop the desired cameras from the list to the playback screen.



---

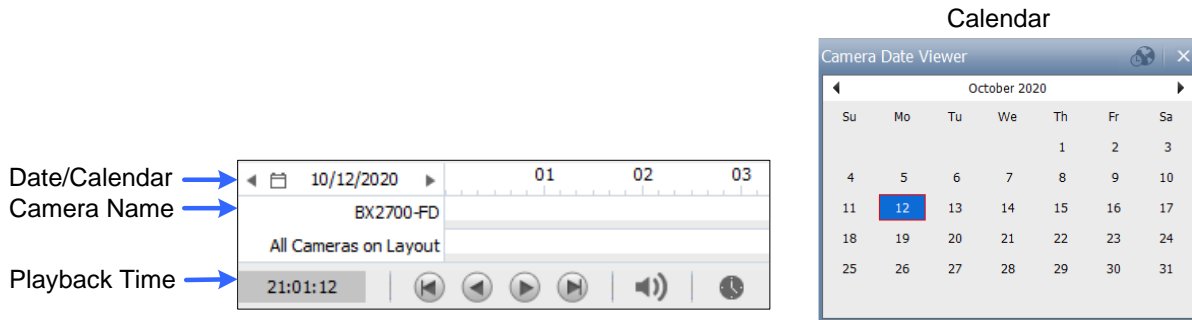
**Tip:** You can also create, drag and drop a created layout to the playback screen.

---



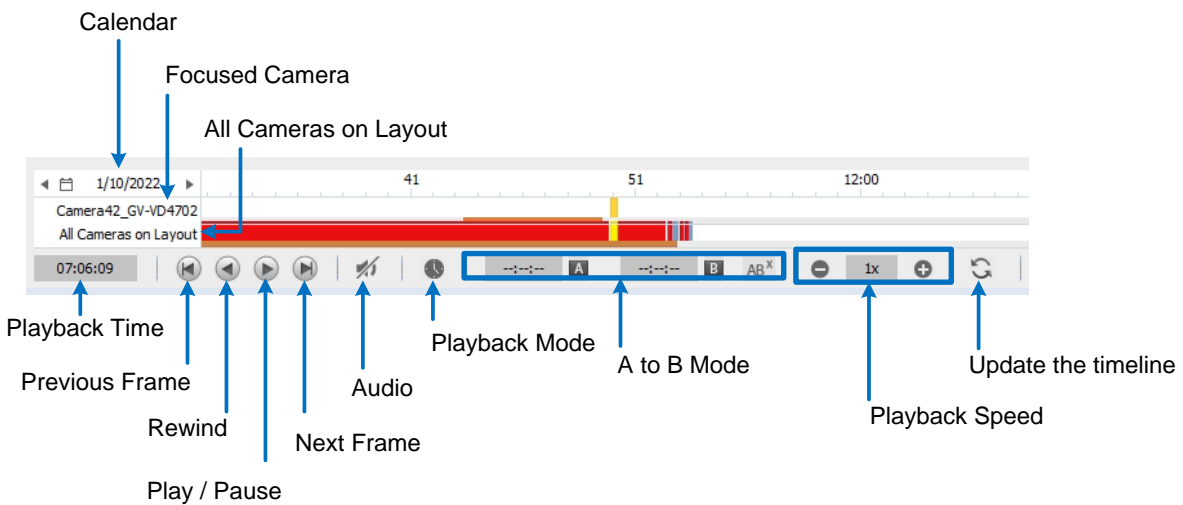
## 1.1 Playing Back a Specific Period of Time from a Particular Camera

1. Select the camera on the screen. Its name appears on the left end of the timeline.
2. Click the date on the left end of the timeline. A calendar appears. The dates with recordings will be highlighted in blue.



3. Select a date with recordings, and close the calendar.
4. Click the desired playback time on the timeline to move the cursor, and click **Play**.

## 1.2 Timeline



### Colors in the timeline:

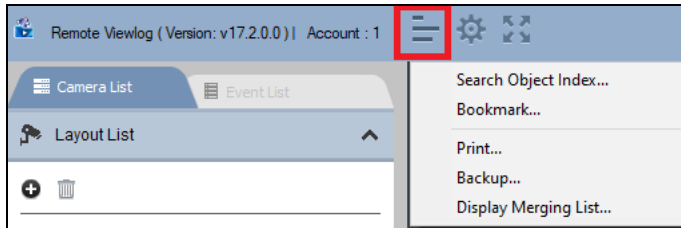
- **Red:** Motion / Intrusion / AI / IO event recordings
- **Blue:** Round-the-clock recordings
- **Orange:** Audio recordings
- **Yellow:** Recordings retrieved from the SD cards of cameras when reconnecting after a temporary disconnection.




## 1. Retrieving Images of Object Index

The images of Object Index include those of **Object Index**, **Face Detection** and **Video Snapshot**. With the Remote ViewLog Service, you can retrieve all the Object Index images from a GV-DVR / NVR / VMS through the network.

1. On the toolbar, select **Tools**  > **Search Object Index**.




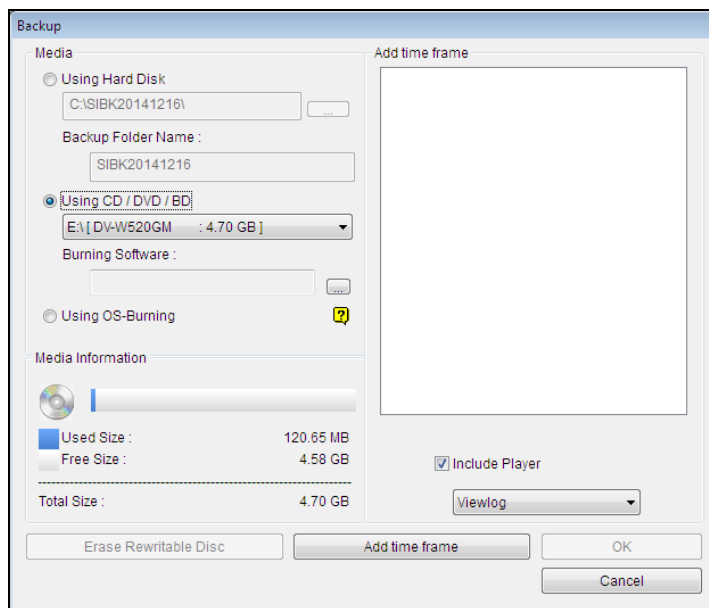
2. On the Object Index Search window, select the desired camera and file date for playback.
3. Click the **Refresh** button  to refresh the date and time.
4. To play images with the ViewLog player, double-click the desired frame on Object Index List.



## 2. Recording Backup

You can back up files from a remote GV-DVR / NVR / VMS using the Remote ViewLog Service. The backup resume is possible when the file transfer is interrupted by network problems.

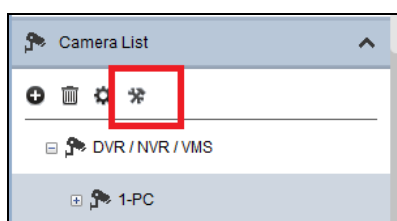
1. To back up the recordings, on the toolbar, select **Tools**  > **Backup**. See 5.2 *Backing Up Recorded Files* in Chapter 5, [GV-VMS User's Manual](#) for related backup settings.



2. When the backup is interrupted, this message will appear: *There are x file(s) couldn't be backup. Do you want to keep a log file and backup them later?*
3. Click **Yes**. You will be prompted to save the partial backup file as \*lv format.
4. To resume the backup, click the **Resume** button at the bottom of the Backup dialog box and locate the partial backup file to continue.

## 3. Host List Import and Export

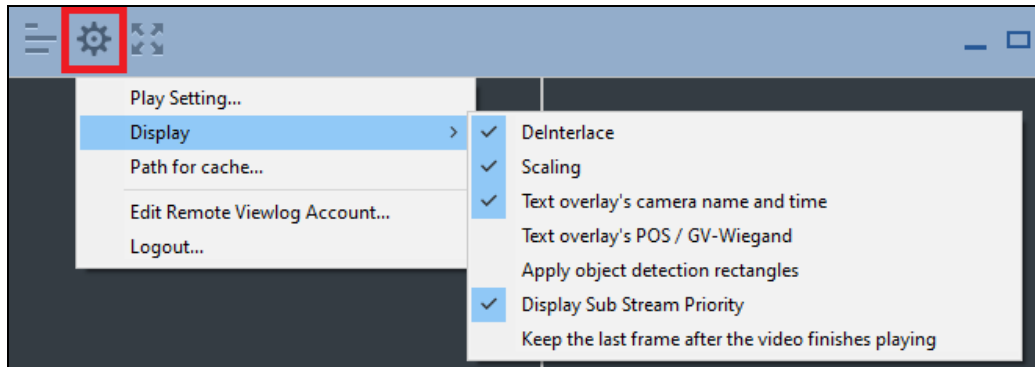
You can export and import the host list to and from another GV-Remote ViewLog. Click the **Tools** button under Camera List to access these functions.





## 4. Display Settings

With the Display settings, you can enhance images by enabling Deinterlace and Scaling, apply text overlay of camera name and time, display POS transactions and/or object detection rectangles. You can also enable sub-stream display to reduce network latency when playing back multiple channels, or select to retain the last image when the video stops playing.



## 5. Account Settings

To add or delete a GV-Remote ViewLog account, open the **Account** dropdown list in the Remote ViewLog login dialog box.

